



**AD**<sup>TM</sup>  
INFLATABLE TENTS

# 2025

[www.airdome.com](http://www.airdome.com)

# ABOUT AIRDOME®

## DESIGNED TO IMPRESS

Experience effortless setup with the Airdome® – fully customizable, air-sealed, and ready to go in under 5 minutes with just one person. As Europe's leader in inflatable tents for marketing, promotions, and events, Airdome® combines innovative design and top-tier manufacturing. Proudly developed in the Netherlands, our tents are delivered within 15 days and backed by a comprehensive 5-year warranty. Trusted by global brands like Volvo, Canon, Gardena, and Alpine, Airdome® is your go-to solution for maximum brand visibility. Ready to elevate your brand, product, or event to new heights?

## TRUSTED BY LEADING GLOBAL BRANDS

URBAN ARROW

**VOLVO**

**WINTERSPORT**

**VREDESTEIN**  
TYRES

*Milwaukee*

**YAMAHA**  
RACING

**GARDENA**

**ABT**

**Canon®**

**ALPINE**

**MAZDA**

**STREETGASM®**





Milwaukee®  
g but HEAVY DUTY.™

AD  
INFLATABLE TENTS


## YOUR BRAND, YOUR VISION

Airdome® is crafted to perfectly align with your brand identity, offering unparalleled exposure, visibility, and a lasting impact. Fully customizable, the Airdome® allows you to bring your brand guidelines to life, from vibrant full-color prints to seams in your signature colors. It's the promotional tool that makes your brand unforgettable.



## SPECS AND MEASUREMENTS

	AIRDOME 300	AIRDOME 400	AIRDOME 500	AIRDOME 600
SIZE :	300 X 300 CM	400 X 400 CM	500 X 500 CM	600 X 600 CM
SURFACE :	9 M2	16 M2	25 M2	36 M2
WEIGHT :	9 KG	14 KG	24 KG	34 KG
FRAME :	260 MM	260 MM	330 MM	400 MM
CLEARANCE :	190 CM	225 CM	275 CM	330 CM
TOP HEIGHT :	235 CM	275 CM	345 CM	417 CM
MEASUREMENTS BAG :	40 X 40 X 30 CM	50 X 40 X 30 CM	50 X 50 X 30 CM	60 X 50 X 30 CM



## 1 SINGLE BACKPACK

The Airdome® comes in 1 single backpack and can be set-up by 1 person in less than 5 minutes.



## AIR CLOSED

Due the patented airclosed system the Airdome® only needs to be inflated 1 time, no constant power supply needed.



## AIRDOME® PRICING 2025

Fully customized, air-closed and delivered with a full 5 years warranty. Airdome® is Europe's leading in the design, development and distribution of inflatable tents for marketing, promotions and events. Below you'll find our Airdome® 2024 pricing. For our current discounts or custom projects please contact us or your local reseller directly. The Airdome® will be Plug & Play delivered and comes standard with an inflatable frame, removable roof (waterproof and fire retarded), carrying bag and fastening set. Walls can be delivered in closed, door, panorama or window. Printing is based on the complete object printing of the roof/wall section. The Airdome® is manufactured with the highest quality standards and comes standard with a full 5 years warranty. The production and delivery time is 12 - 15 business days for orders in Europe and 20 - 25 business days worldwide.

### AIRDOME® 300 (3 X 3 M)

Basic set (base + roof): €1390  
 Roof printing: €340  
 Side wall: €100  
 Side wall printing: €140  
 Sunshade awning: €380  
 Tunnel connection: €140  
 Sand weights: €40 x 4  
 LED-Kit 220V Clear: €170  
 High Pressure Pump 220V: €120

### AIRDOME® 400 (4 X 4 M)

Basic set (base + roof): €1690  
 Roof printing: €390  
 Side wall: €120  
 Side wall printing: €160  
 Sunshade awning: €430  
 Tunnel connection: €180  
 Set of sand weights: €50 x 4  
 LED-Kit 220V Clear: €170  
 High Pressure Pump 220V: €120

### AIRDOME® 500 (5 X 5 M)

Basic set (base + roof): €1990  
 Roof printing: €440  
 Side wall: €140  
 Side wall printing: €180  
 Sunshade awning: €480  
 Tunnel connection: €200  
 Set of sand weights: €60 x 4  
 LED-Kit 220V Clear: €170  
 High Pressure Pump 220V: €120

### AIRDOME® 600 (6 X 6 M)

Basic set (base + roof): €2290  
 Roof printing: €490  
 Side wall: €160  
 Side wall printing: €200  
 Sunshade awning: €530  
 Tunnel connection: €220  
 Set of sand weights: €70 x 4  
 LED-Kit 220V Clear: €170  
 High Pressure Pump 220V: €120

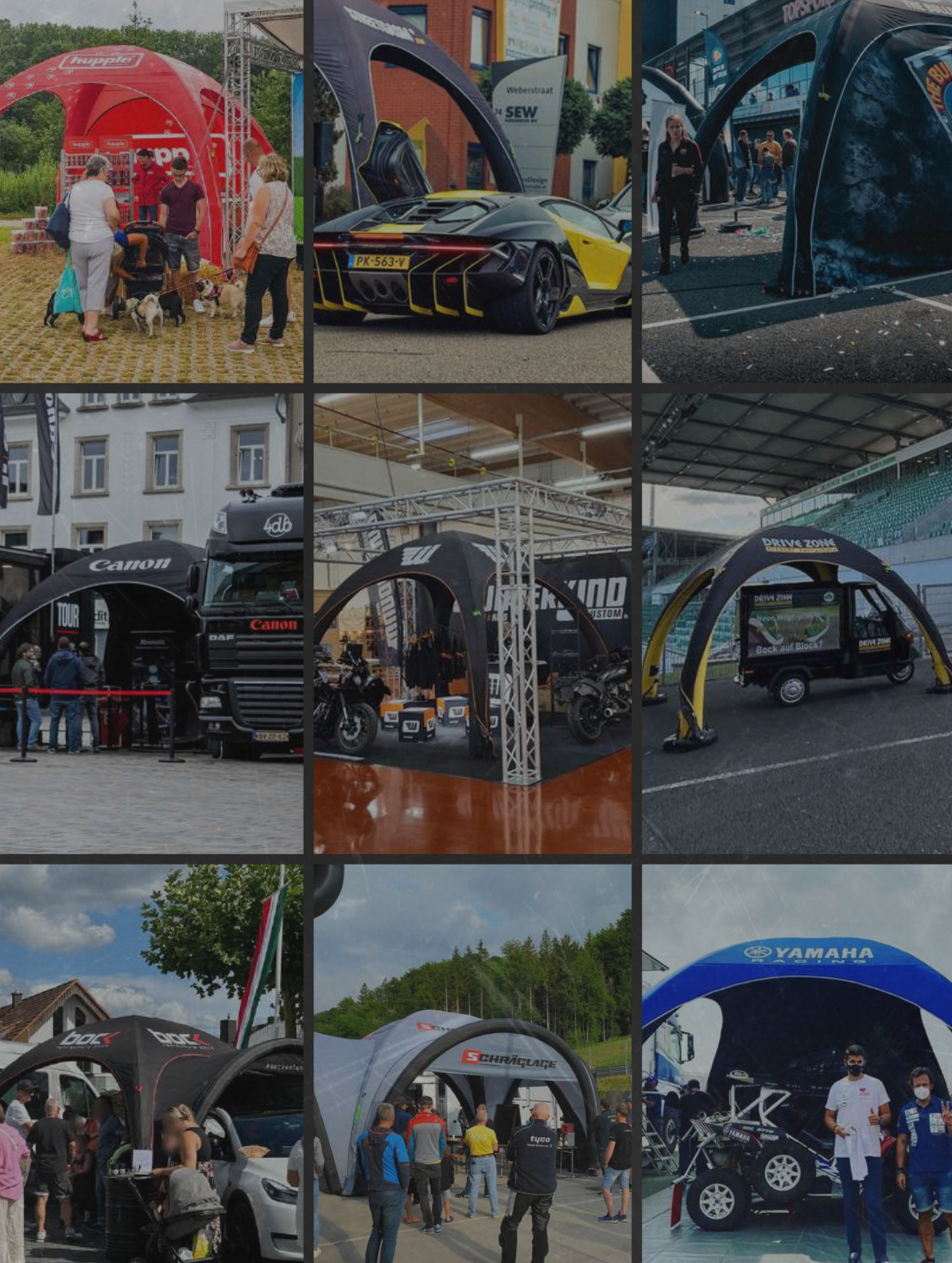
*\*Pricing 2025. Prices are in € (euros) and based on single items. For more than 1 item or a larger project based quantity, please contact us or your local reseller for a custom offer or current discount offers. Pricing excludes 21% VAT for orders within the Netherlands. For orders in Europe no VAT will be charged. The production and delivery time is 12 - 15 business days for orders in Europe and 20 - 25 business days for orders worldwide. For any deadlines please contact us directly. Pricing excludes €69 delivery costs per set.*

## ARTWORK AND 3D DESIGN

Ready to be amazed? Our expert design team handles the entire artwork process to deliver a stunning representation of the Airdome® in your brand's identity. A complimentary AR design, whereby you can discover your branded Airdome® in real life, will be created once we receive your logo files in PDF, AI, or EPS format. Ready to see how Airdome® can bring your brand to life?



AIRDOME®  
INFLATABLE TENTS



**CLAIM YOUR FREE DESIGN:**



**SCAN ME**

Airdome® is a licensed brand by EBS. All rights reserved.